



**Optimal Tissue Reinforcement**



***STRONG***

***SYNTHETIC***

***DEGRADABLE***

***SAFE***

[www.Artelon.com](http://www.Artelon.com)

## STRONG

- Proven strength and support for Tendon and Ligament repairs.
- Long-term load sharing and stabilization from repair through remodeling to the maturing phase.
- Enhanced mechanical strength.

## DEGRADABLE (LONG-TERM SUPPORT)

- Long-Term predictable degradation leads to predictable outcomes.
  - 90% Tensile strength remains @ 1 years
  - 80% Tensile strength remains @ 2 years
  - 50% Tensile strength remains @ 4 years
- Load sharing and support for repaired tissue begins Day 1 and does not stress shield.
- Integrates with the body over a six-year period.

## SYNTHETIC

- Open scaffolding facilitates host tissue ingrowth and revascularization.
- Elasticity can allow for load sharing, not load bearing.
- Decreased creep and significantly higher ultimate load to failure.

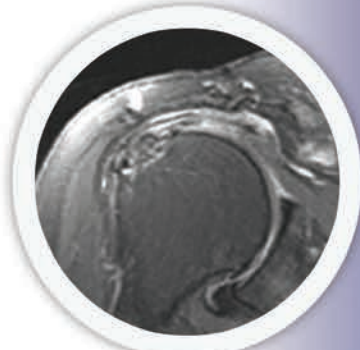
## SAFE

- Eliminates risk of donor disease transmission and collagen reaction.
- Reduces chance of re-rupture with long-term support of recovering and healing.
- Widely used and trusted in more than ten thousand procedures worldwide with a variety of patients, including professional athletes.

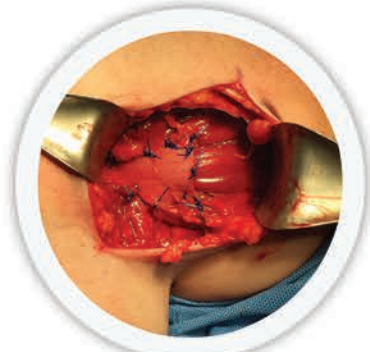
## SHOULDER



**ROTATOR CUFF**



**ROTATOR CUFF - 4 MONTHS OUT**



**PECTORALIS REPAIR**



## KNEE



**ACL - SINGLE HAMSTRING HARVEST**



**ACL - DECREASE CREEP**



**QUADRICEPS REPAIR**



## SURGICAL REPAIRS TRUSTED WITH ARTELON

- Rotator Cuff Repair
- AC Joint Separation
- Distal Biceps
- Achilles Tendon
- Quadriceps Tendon
- ACL Reconstruction
- MCL Reconstruction
- Patellar Tendon
- Total Joint Reinforcement

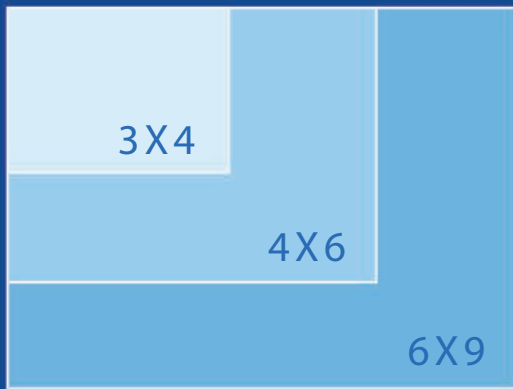
“For over ten years I have been using Artelon in my orthopedic surgical repairs to facilitate tissue ingrowth and regeneration.”

**PROFESSOR DR. LARS PETERSON**  
GOTHENBURG, SWEDEN. MD, PHD,  
ORTHOPEDIC SURGEON

“Using the Artelon Reinforcement to augment my soft tissue repairs allows me to confidently use more progressive postoperative, physical therapy protocols to achieve better early passive motion and ultimately improved outcomes for my patient.”

**ASSISTANT PROFESSOR DR. GEOFFREY B HIGGS**  
VIRGINIA COMMONWEALTH UNIVERSITY,  
MD, ORTHOPEDIC SURGEON

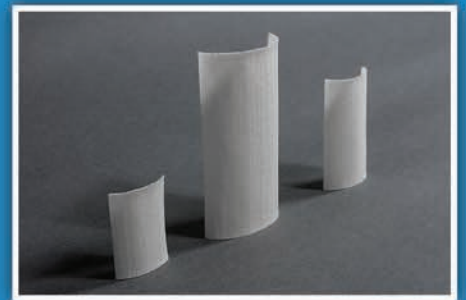
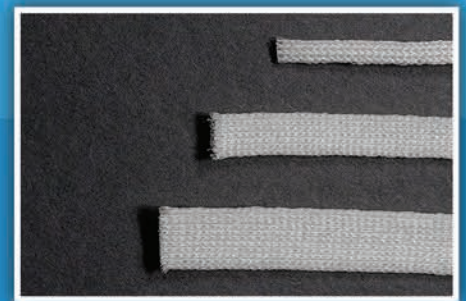
# SIZE CHARTS



	8cm	16cm
.7cm		
.5 cm		
.3 cm		

## BENEFITS

- ✓ Intra-operative Decision - *No Pre-Ordering*
- ✓ Easy to Cut and Handle
- ✓ 5 Year Shelf Life
- ✓ 5 Minute Prep Time



## ABOUT ARTELON

Artelon is the world's first synthetic, biocompatible and degradable tissue reinforcement developed specifically for Orthopedic and Podiatric surgeons. Designed, tested and proven for soft tissue reinforcement. Artelon represents 15 years of surgical experience with reliable and long lasting outcomes.

**Optimal Tissue Reinforcement**



615-783-1712

customerservice@artelon.com

References on file

WWW.**Artelon**.com